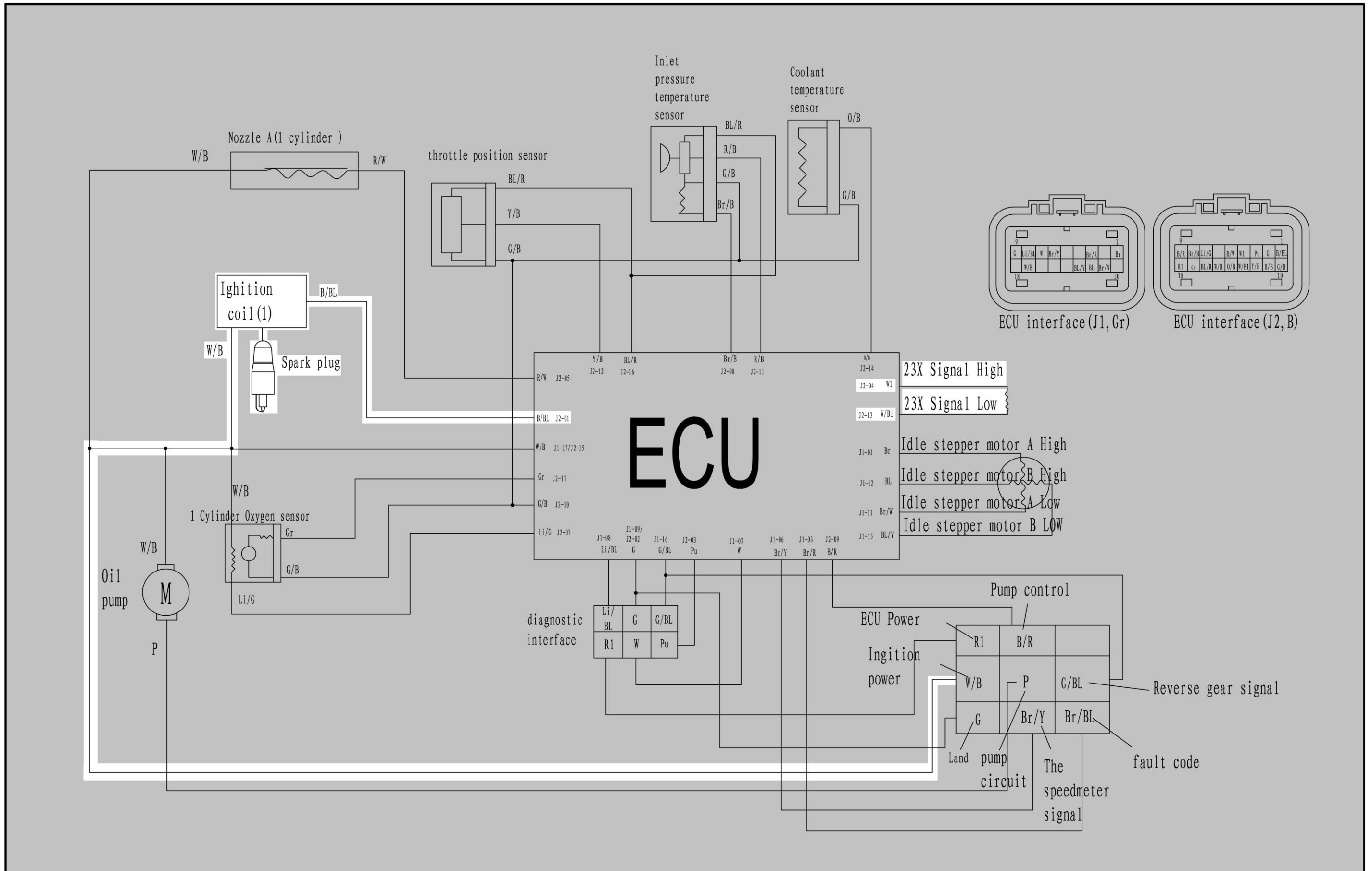
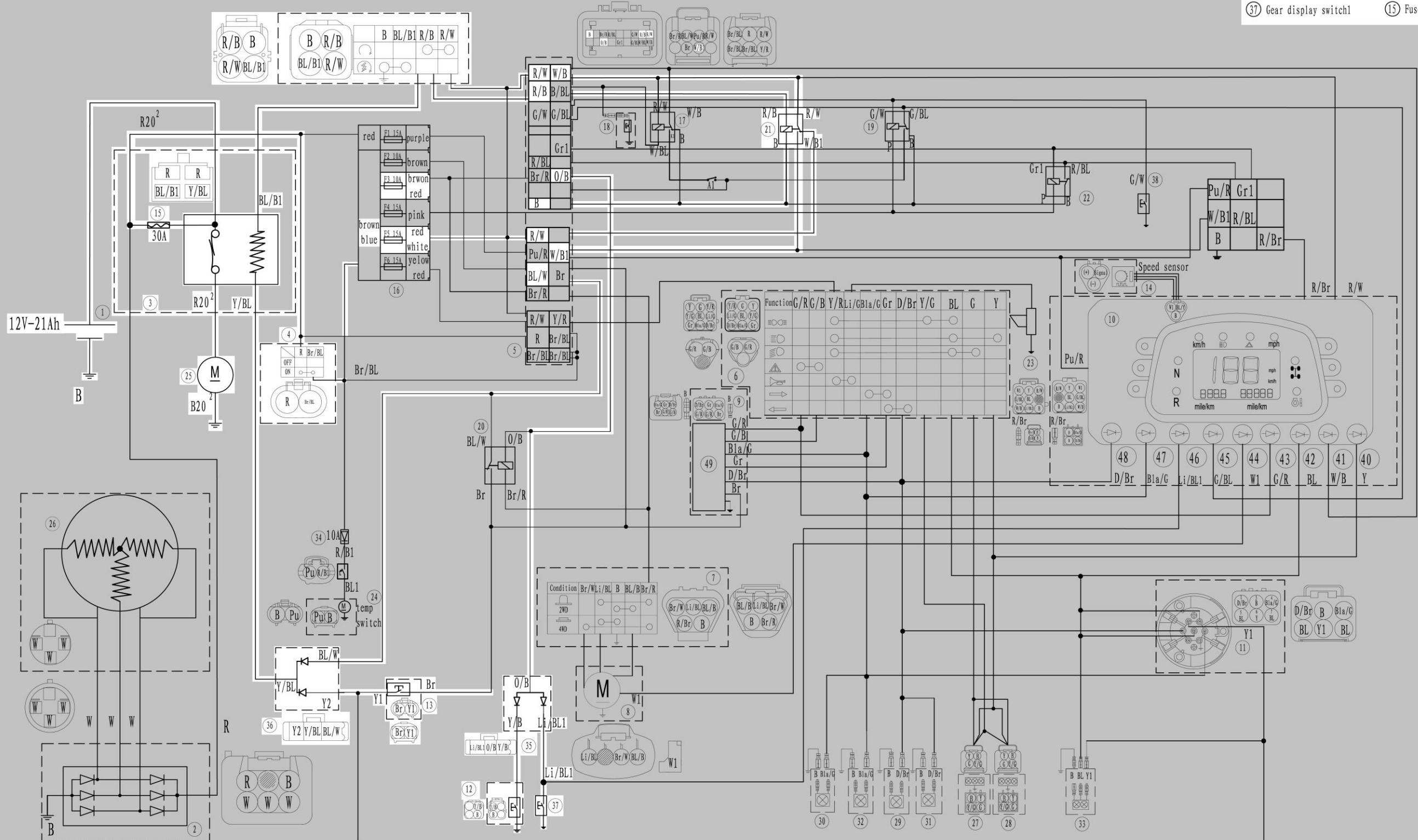


# IGNITION SYSTEM CIRCUIT DIAGRAM



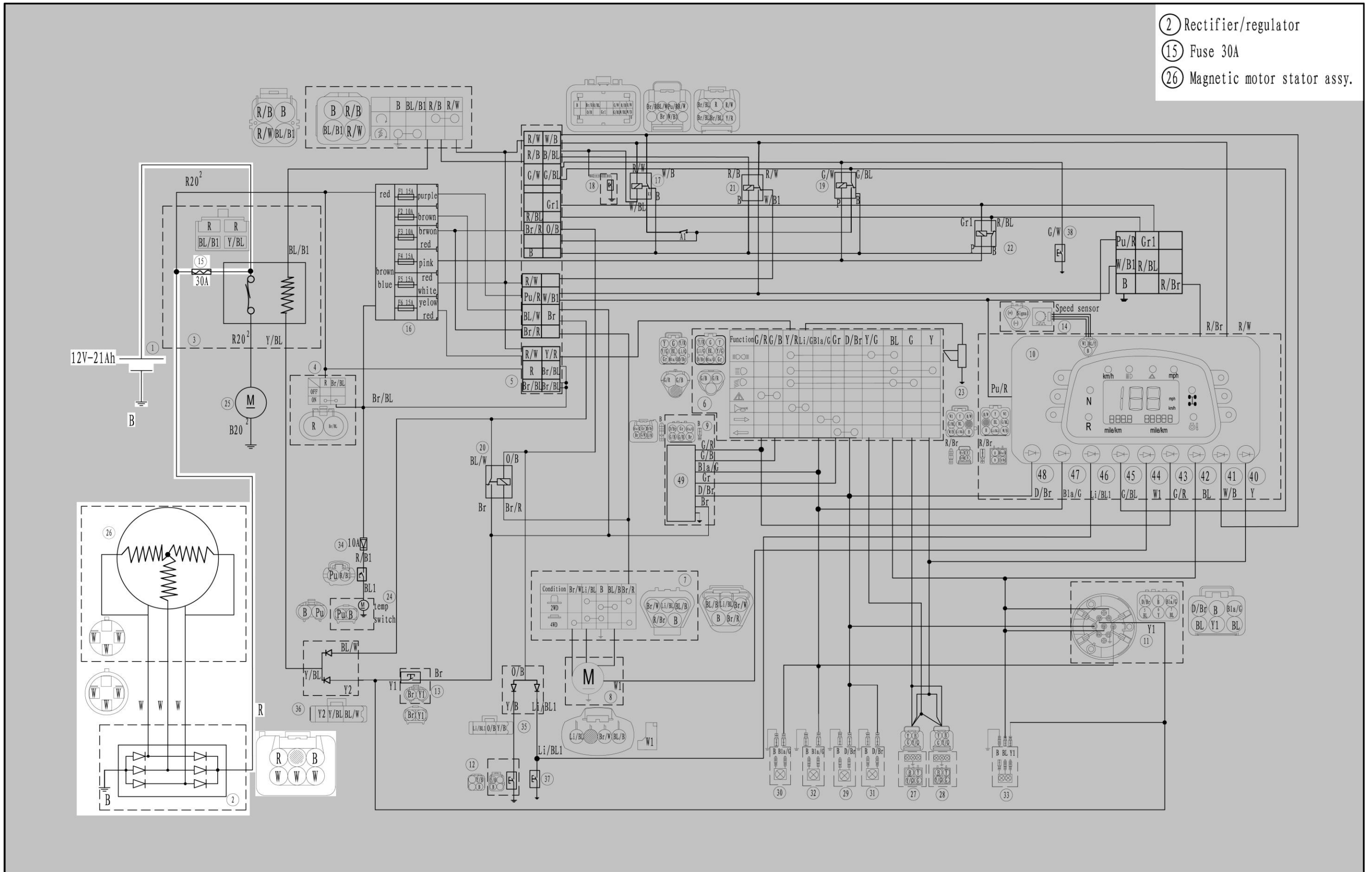
# ELECTRIC STARTING SYSTEM CIRCUIT DIAGRAM

- ① Failure broken relay
- ② Starter relay
- ③ Head light assy. (R)
- ④ Ignition switch part
- ⑤ N gear, parking start dilde
- ⑥ Final motion switch
- ⑦ Brake start dilde
- ⑧ Rear brake switch
- ⑨ Gear display switch1
- ⑩ Fuse 30A



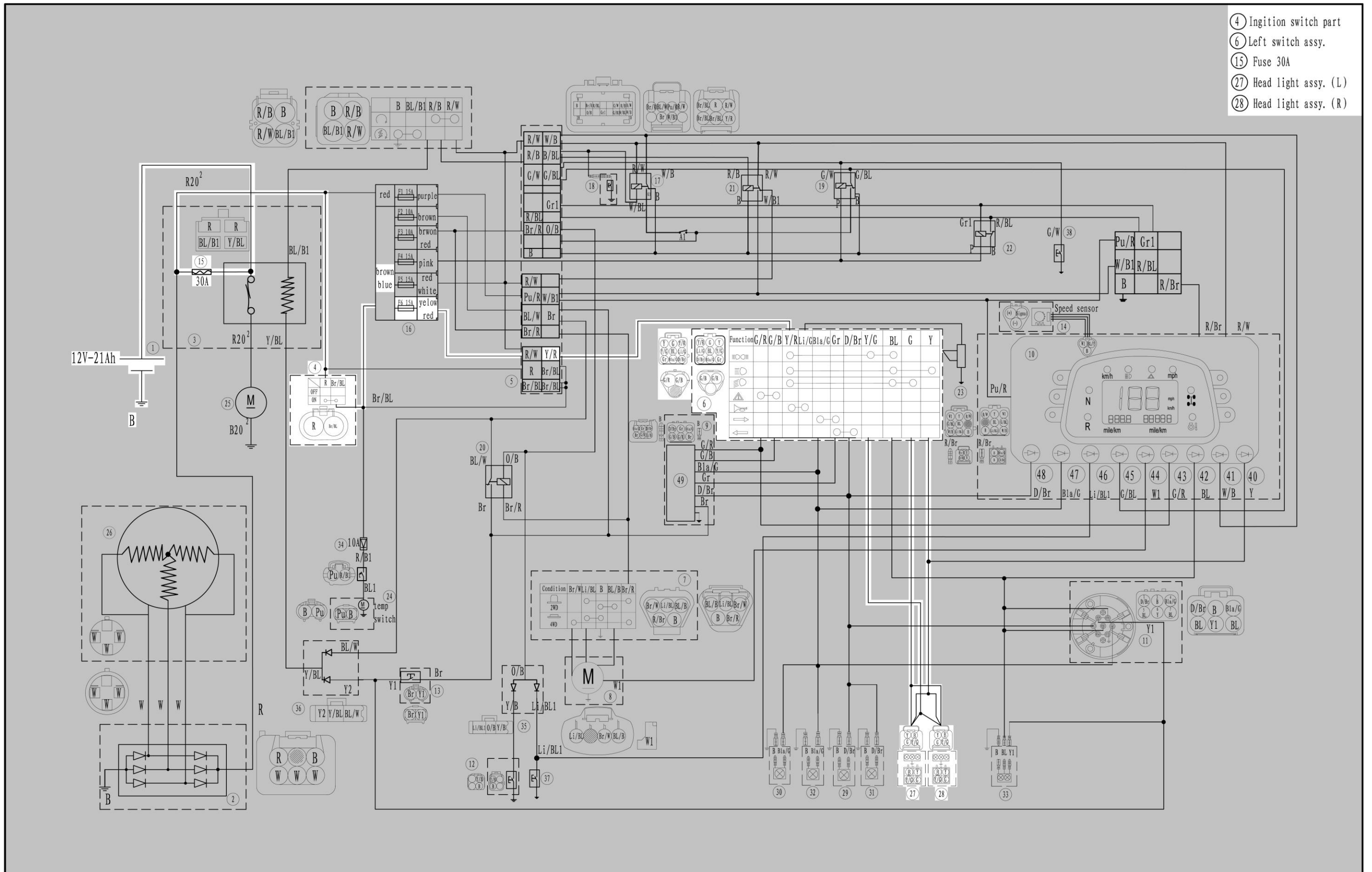
# CHARGING SYSTEM CIRCUIT DIAGRAM

- ② Rectifier/regulator
- ⑮ Fuse 30A
- ⑳ Magnetic motor stator assy.

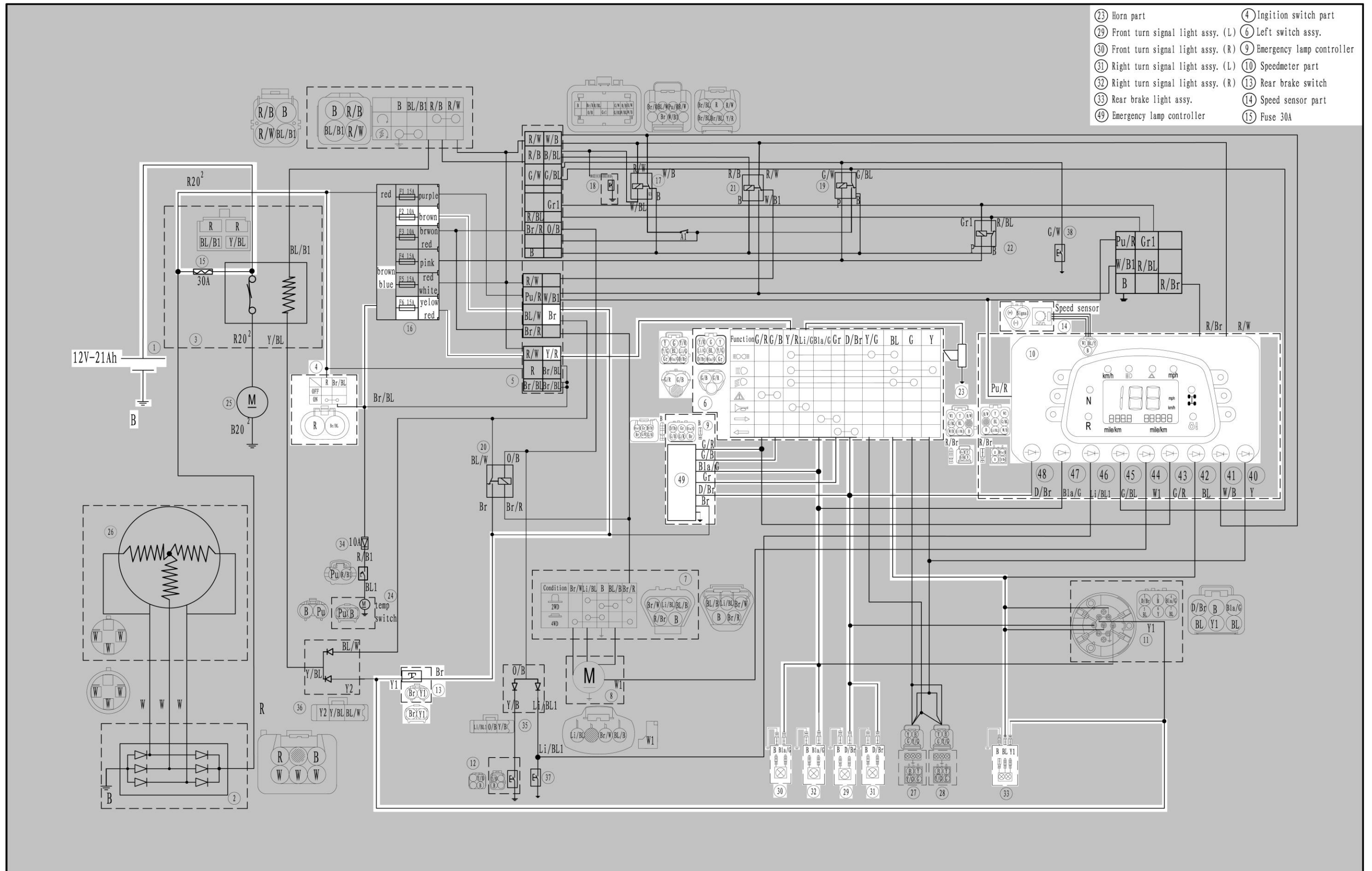


# LIGHTING SYSTEM CIRCUIT DIAGRAM

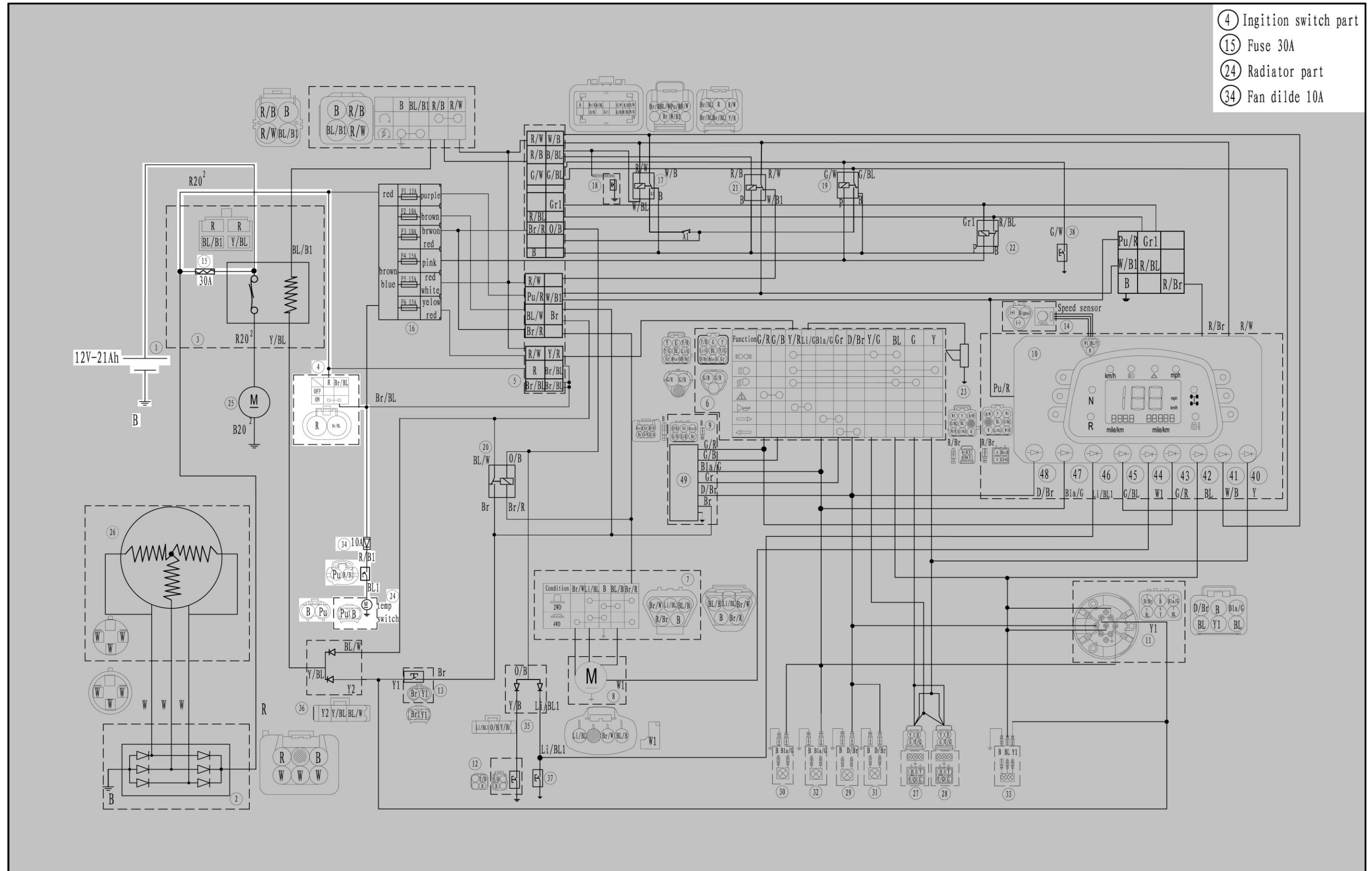
- ④ Ignition switch part
- ⑥ Left switch Assy.
- ⑮ Fuse 30A
- ⑳ Head light Assy. (L)
- ㉘ Head light Assy. (R)



# SIGNALING SYSTEM CIRCUIT DIAGRAM



# COOLING SYSTEM CIRCUIT DIAGRAM



## 2WD/4WD SELECTING SYSTEM CIRCUIT DIAGRAM

- ④ Ignition switch part
- ⑦ Right switch assy.
- ⑧ 2WD/4WD motor
- ⑮ Fuse 30A

